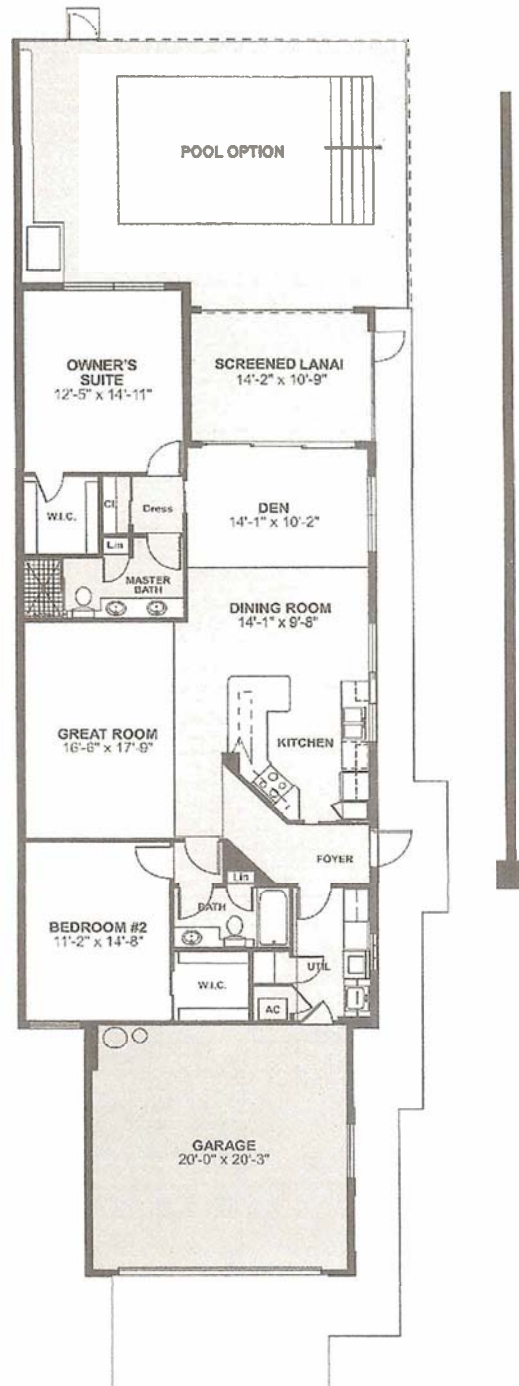
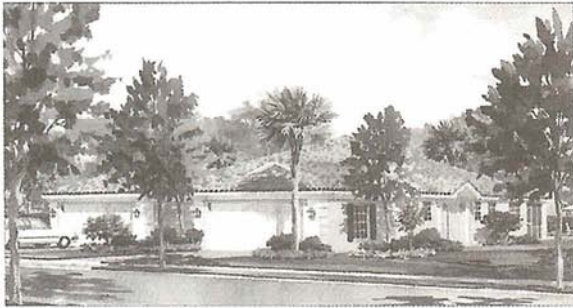


Capri III

Luxury Patio Home

2 Bedrooms, Open Den Area,
2 Baths, 2-Car Garage



Capri III Square Footage

Residence Area	1,526 sq. ft.
Garage Area	437 sq. ft.
Lanai	160 sq. ft.
Total	2,123 sq. ft.

 Divosta Homes, LP, the seller of the property, has contracted with Divosta Building Corporation (CB-C01/129) to build the Homes. Artist's renderings are conceptual only. Exact dimensions and spatial arrangements on this plan are approximate and may vary in final construction.

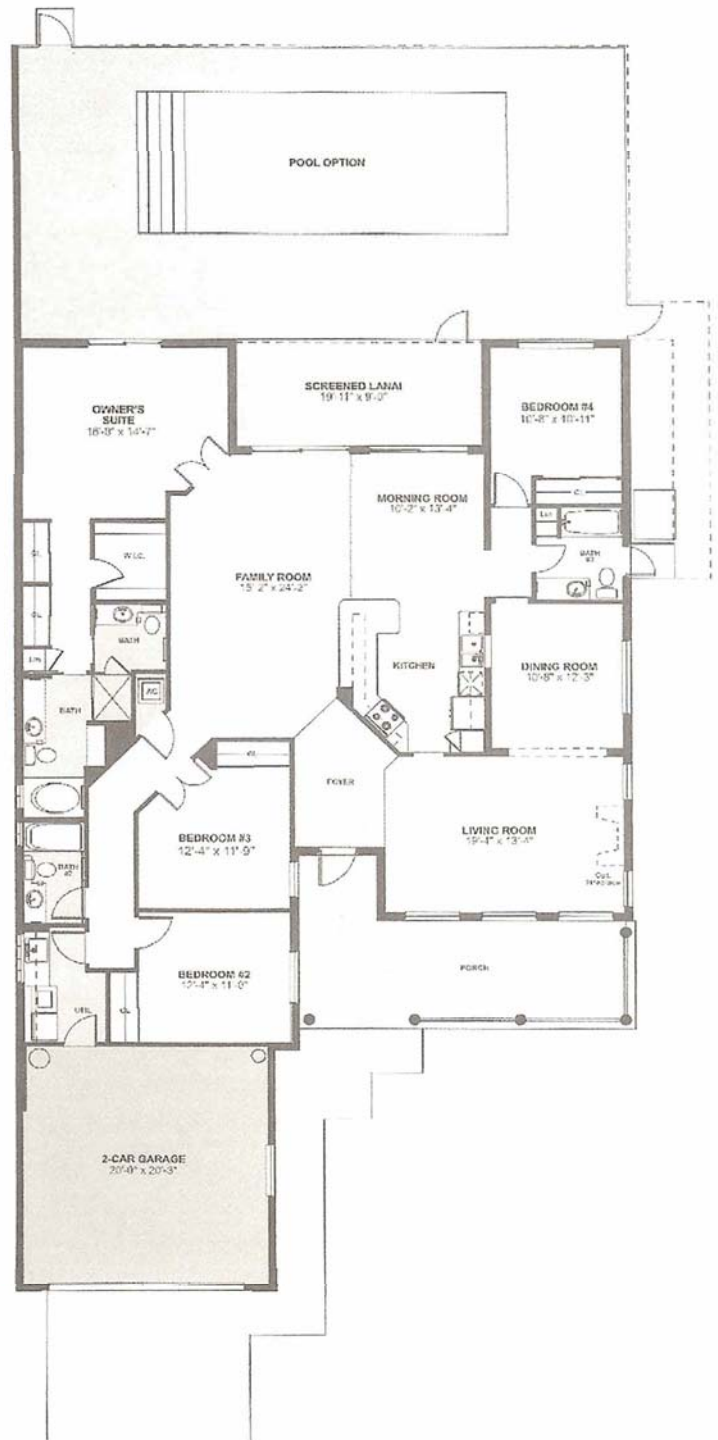


Carlyle

Luxury Single-Family

4 Bedrooms, 3 Baths,

2-Car Garage



Carlyle Square Footage

Residence Area	2,506 sq. ft.
Garage Area	437 sq. ft.
Entry Porch	276 sq. ft.
Lanai	180 sq. ft.
Total	3,399 sq. ft.



Divosta Homes, LP, the seller of the property, has contracted with Divosta Building Corporation (CB-C017129) to build the homes. Artist's renderings are conceptual only. Exact dimensions and spatial arrangements on this plan are approximate and may vary in final construction.

DIVOSTA
HOMES

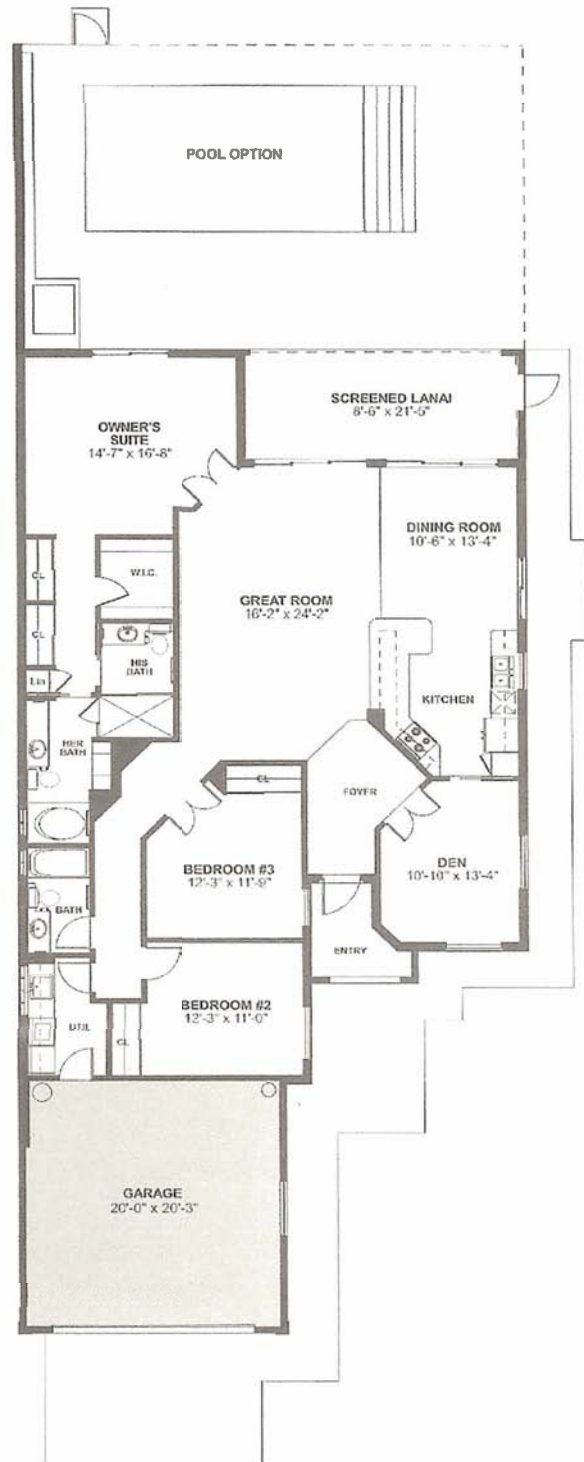
THE FULL HOME FAMILY™

Oakmont

Luxury Single-Family Home

3 Bedrooms, Den,

2 Baths, 2-Car Garage



Oakmont Square Footage

Residence Area	2,000 sq. ft.
Garage Area	437 sq. ft.
Entry Porch	51 sq. ft.
Lanai	198 sq. ft.
Total	2,686 sq. ft.



Divosta Homes, L.P., the seller of the property, has contracted with Divosta Building Corporation (CB-CO17129) to build the homes. Artist's renderings are conceptual only. Exact dimensions and spatial arrangements on this plan are approximate and may vary in final construction.

DIVOSTA
HOMES

THE FULTON HOMES FAMILY™

Cayman

Luxury Two-Story Townhome

3 or 4 Bedrooms, 3 Baths,

2-Car Detached Garage



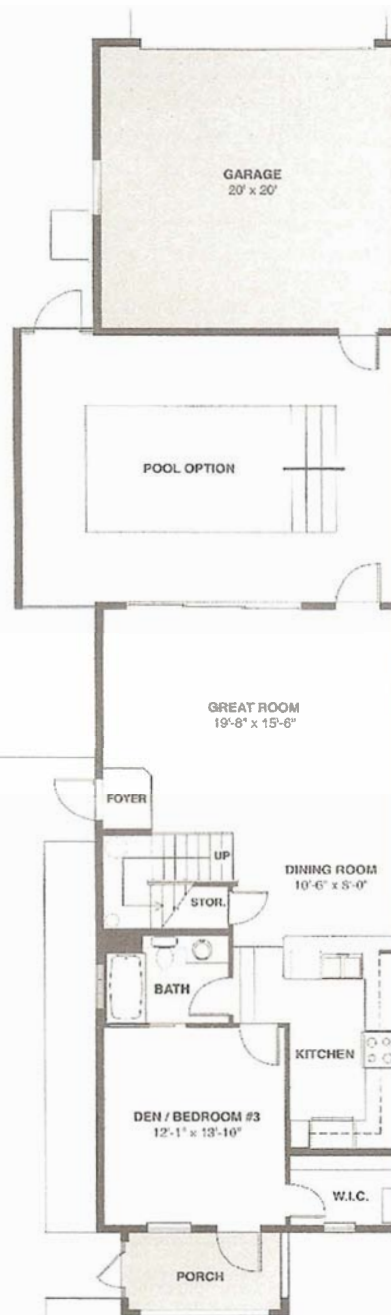
Elevation A



Elevation B

Cayman Square Footage

Residence Area	1,720 sq. ft.
Garage Area	400 sq. ft.
Front Porch	57 sq. ft.
Balcony	57 sq. ft.
Patio Deck	486 sq. ft.
Total	2,123 sq. ft.



SECOND FLOOR
4TH BEDROOM OPTION



D'Vosta Homes, LP., the seller of the property, has contracted with D'Vosta Building Corporation (CB-CO17129) to build the homes. Artist's renderings are conceptual only. Exact dimensions and spatial arrangements on this plan are approximate and may vary in final construction.

D'VOSTA
HOMES

THE PLATE HOMES COMPANY

